

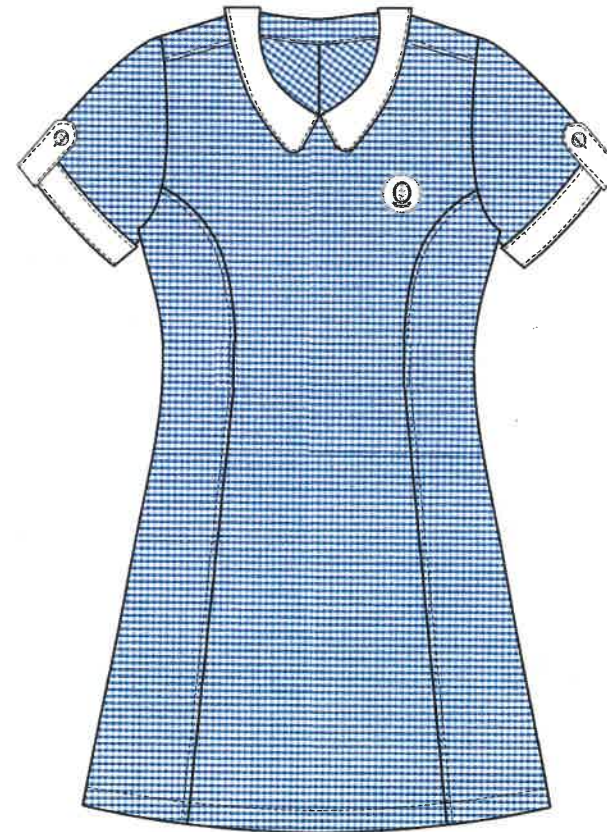
TUNIC: SSKP03

White Peter Pan collar round edge
closer to the neck.

Princess seam dress

Neck opening at the center back
with same buttons as used on the
sleeves

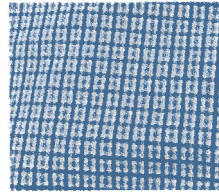
Patch size 40mm



SUMMER BOYS- KINDERGARTEN

SHIRT: SBKS08

Single pocket with
Plain patch pocket
Logo on the pocket
(40mm)



White collar and white edge at the
sleeve. Yolk at the back with a box
pleat.

Fabric – Check same as tunic

TROUSER: SBKP02

Shorts
Single pleat at the
Front



Slant Pocket

Straight fit

Back welt pocket with simple
button & Button hole

Waist adjustment as shown below:



SBKS08



White collar to
match the
peter-pan
collar as in
Tunic

SBKP02



SHIRT: SBS02

Single plain pocket
with logo.
Yolk at the back with
box pleat .
Logo size 40mm



SBS02



TROUSER: SBT02

Shorts
Single pleat at the
Front
Slant Pocket
Straight fit
Back welt pocket with simple
button & Button hole
Fabric -
Waist adjustment as shown below:



SBT02



SUMMER BOYS – SECONDARY

SHIRT: **SBS02**

Single pocket with
Logo patch
Yolk at the back with box pleat
Logo size 50 mm



SBS02



TROUSER: **SBT02**

Single pleat at the
front
Straight fit
Back welt pocket
with simple button & Button hole



SBT02



Waist adjustment as shown below:



SUMMER GIRLS- PRIMARY & SECONDARY

SHIRT: **SBS02**

Single pocket with
logo patch
Yolk at the back with
box pleat



SBS02



SKIRT: **SSK04**

Knee Length
Button and zip on the
left side seam
Slit pocket on the right side seam
Loops at the waist belt
Waist adjustment as shown below:



SSK04



Pleat
stitched till
hip level.



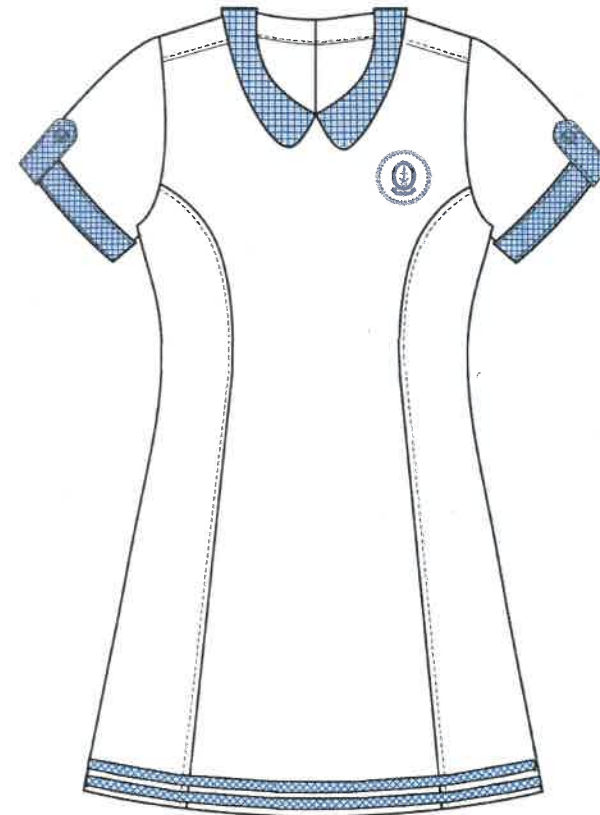
SSKP03

TUNIC : SSK03

White Tunic with Peter Pan collar in check fabric and with 2 stripes at the bottom edge of check fabric

The neck opening need to be close to the neck

Opening in the center back with buttons used same on the sleeve.



T-SHIRT: SPT06 A

Solid T-shirt

Raglan sleeves

2 white stripes at shoulder to neck
line

2 thin stripes at the collar (rib knit)

Logo on the left side

Small slit of both sides of the hem
line

TRACK PANTS :

White colour track pants.

Straight fit

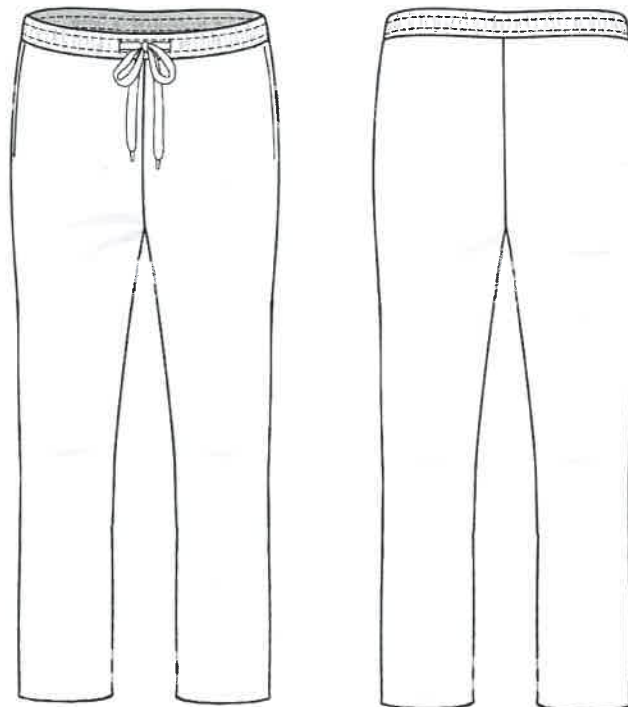
Slant pocket

2 think stripe of house colour,
matching to the t- shirt.

Elastic at the waist with loop
and cord in the center front.

Cord to adjust the waist elastic

SPT06 B



JACKET : SPJ01

Solid Navy blue colour Jacket with shirt collar and front open zip.
Grey colour fabric below the collar
Slit pocket in the side seam on both sides with 2mm grey piping
Logo on the left side
Fabric is fleece



TRACK PANTS :

Navy Blue colour track pants.
Straight fit
Slant pocket on the side seam
Elastic at the waist with loop and cord in the center front.
Cord to adjust the waist elastic.



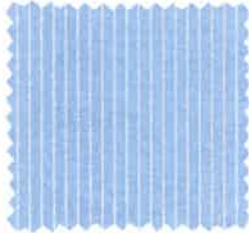
SHIRT: SBS02

Single pocket with
logo

Classic collar

Full Sleeve Shirt

Yolk at the back with box pleat



SBS02



TROUSER: SBT02

Plain grey fabric

Single pleat at the front

Straight fit

Back welt pocket with simple
button & Button hole

SBT02



Waist adjustment as shown below:



WINTER GIRLS - BLAZER

Blazer: SGBL01

Narrow lapel

Thin light blue piping of 2mm

Logo on left size

Princess seam for

better fit with a slip pocket

Buttons same as blazer colour

SGBL01



Slip pocket
on the
seam

Slip pocket

[invisible on princess seam]



Blazer: SBL01

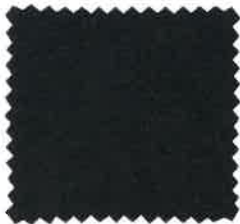
SBL01

Blazer for Boys –
Classic shawl collar
With very thin light blue
piping (2mm)

Flap pockets and one patch pocket
with slight round edges on the top
with Logo patch.

Size of the patch pocket smaller, as
per the size of the blazer

Buttons same as blazer colour



SWEATER: PSSW07

PSSW07

Cardigan- Navy blue
with cable pattern of
the knit

Light blue stripe comes
inside the rib portion at the
Neck line and the cuff





Style no: CPPS 04

Gender:

Style name: CAPS – STYLE 4

Category:

Comments:

Date:

NCS embroidered with the house colour and a

Thin colour strip
of house colour
on the edge of
peak of the cap.



STYLE 10

Tie :

Navy Blue solid colour tie with logo
in the center.

Style 10 - light blue colour 2 thin
diagonal stripes (Thickness of
stripe 2mm)

Light blue colour same as shirt
colour



BELT: SPB2

The belt has blue and white stripes or solid blue colour

Steel buckle with NCS logo in the center



4 cm



SSOC 01

SSOC 08

Socks: SSOC 08

Regular – summer and Winter

Summer - Plain navy blue with 2 thin light blue lines, just below the cuff of socks. Light blue colour same as shirt colour.

(Thickness of stripe 2mm)



Regular Socks- Summer



Regular Socks- Winter

Winter – Plain Grey socks

Navy blue and Grey colour same as the trouser colour

SUMMER GIRLS/ BOYS -PRIMARY / SR. SECONDARY



BACK VIEW



WINTER GIRLS - PRIMARY / SR. SECONDARY



WINTER BOYS - PRIMARY / SR. SECONDARY



PATCH

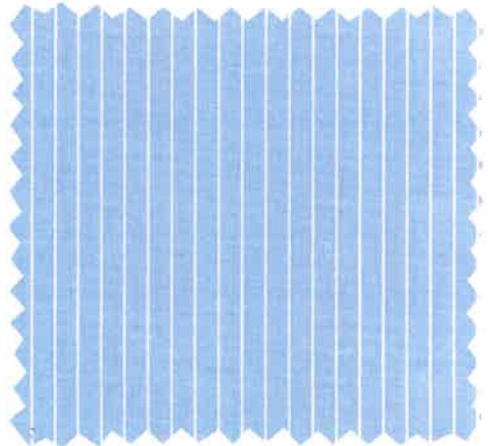
It is a woven patch.

Patch size

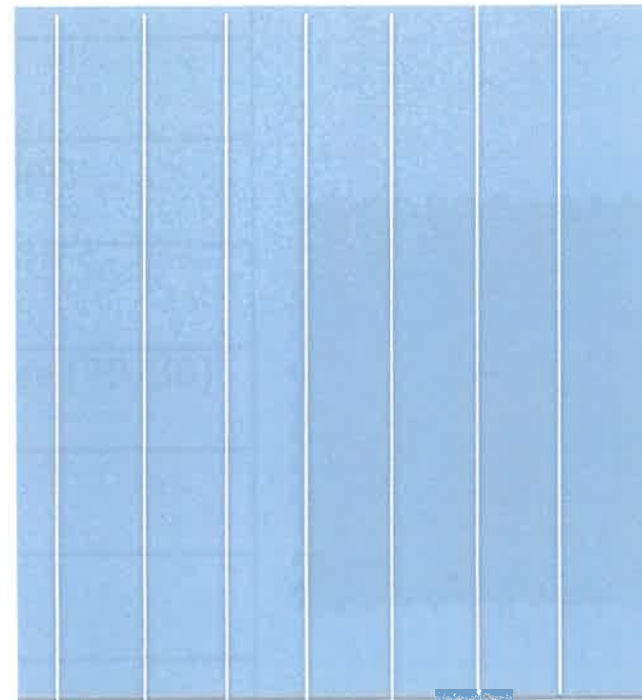
- 40 mm – To be used on the Kindergarten and Primary section Uniforms
- 50 mm – to be used on the secondary class uniforms.



Fabric 1

Product Category	Shirt H/S & F/S	
Gender	Boys/ Girls	
Category	Primary /Secondary	
Season	Summer / Winter	
Yarn Type	Polyester /Cotton (67/33)	
Count	2/40, 2/40	
GSM	108	
Fabric Type	Plain Weave	
Fabric Colour	Sky Blue with white stripes	

Details of Fabric



6mm blue stripe

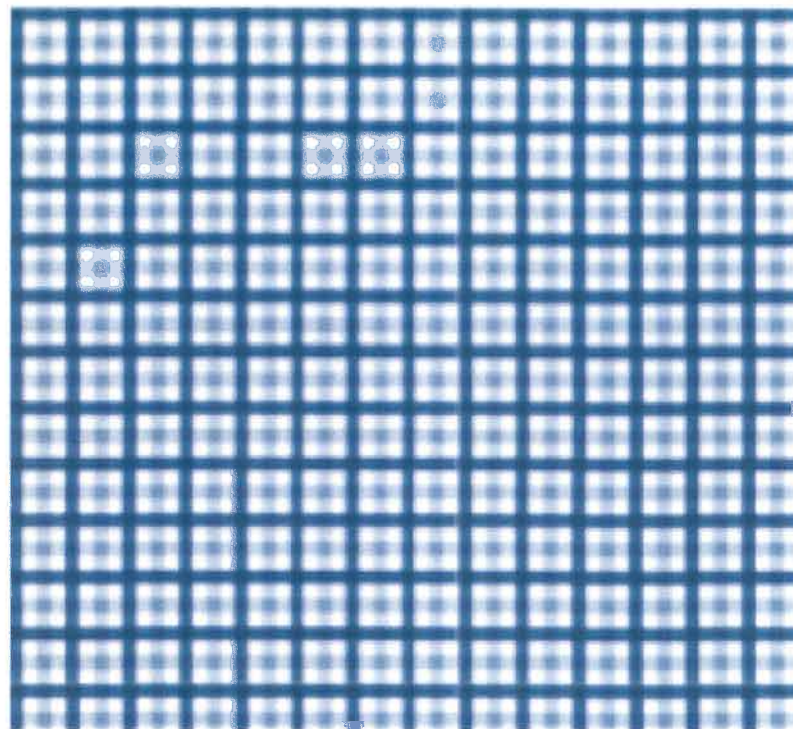
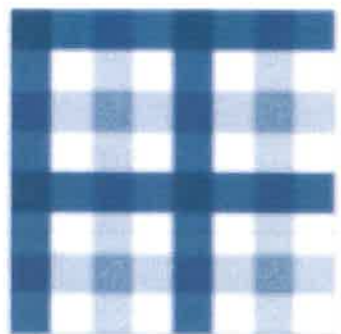
2 mm white stripe

Fabric 2

Product Category	Shorts/ Skirt/ Trouser	
Gender	Boys/ Girls	
Category	Primary /Secondary	
Season	Summer	
Yarn Type	Polyester /Viscose (70/30)	
Count	2/30, 2/30	
GSM	250 +	
Fabric Type	Twill Weave	
Fabric Colour	Navy Blue	

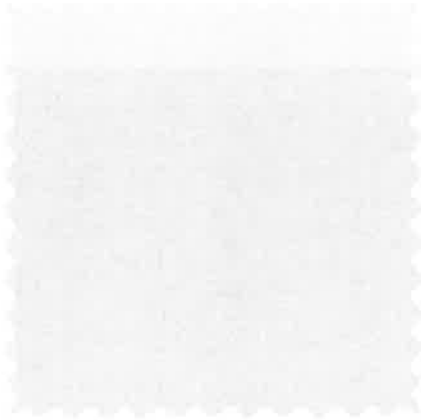
Fabric 3

Product Category	Tunic/ Shirt	
Gender	Boys/ Girls	
Category	Kindergarten	
Season	Summer	
Yarn Type	Polyester /Cotton (65/35)	
Count	2/40, 2/40	
GSM	120-130	
Fabric Type	Plain Weave	
Fabric Colour	Dark Blue, Sky Blue with white check	



Pantone for Dark Blue 654 C


Fabric 4

Product Category	Tunic / Shorts	
Gender	Boys/ Girls	
Category	Kindergarten	
Season	Summer / Winter	
Yarn Type	Polyester /Cotton (67/33)	
Count	2/40, 2/40	
GSM	250	
Fabric Type	Plain Weave	
Fabric Colour	White	

Fabric 5


Product Category	Trouser	
Gender	Boys/ Girls	
Category	Primary /Secondary	
Season	Winter	
Yarn Type	Polyester /Viscose (67/33)	
Count	2/40, 2/40	
GSM	325 GSM	
Fabric Type	Twill 2/2	
Fabric Colour	Grey	

Fabric 6


Product Category	Cardigan	
Gender	Boys/ Girls	
Category	Primary /Secondary	
Season	Winter	
Yarn Type	Acrylic 100%	
Count	15s	
GSM	305- 315 GSM	
Fabric Type	Cable Knit	
Fabric Colour	Navy blue and light blue stripe	

*The count may vary from 10 – 15s

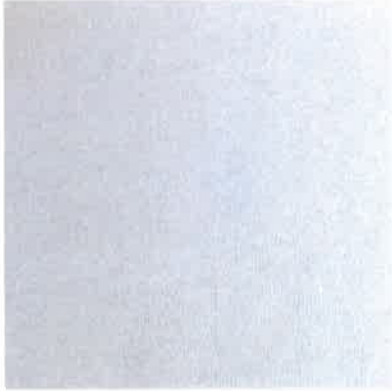
Fabric 7

Product Category	Blazer	
Gender	Boys/ Girls	
Category	Primary /Secondary	
Season	Winter	
Yarn Type	Polyester/ Viscose (70/30)	
Count	2/18, 2/18	
GSM	350 +	
Fabric Type	Plain Weave	
Fabric Colour	Navy Blue	

Fabric 8

Product Category	Sports T -shirt	
Gender	Boys/ Girls	
Category	Kindergarten/ Primary /Secondary	
Season	Summer	
Yarn Type	Polyester/ Cotton (65/35)	
Count	24s	
GSM	200- 220	
Fabric Type	Spun PK	
Fabric Colour	Navy Blue, Red, Yellow, Green	


Fabric 9

Product Category	Sports Track Pants	
Gender	Boys/ Girls	
Category	Primary /Secondary	
Season	Summer	
Yarn Type	Polyester/ Cotton (65/35)	
Count	26s	
GSM	220-250	
Fabric Type	Jersey knit	
Fabric Colour	White	


Fabric 10

Product Category	Sports T rack Pants / JACKET	
Gender	Boys/ Girls	
Category	Primary /Secondary	
Season	Winter	
Yarn Type	100 % Polyester	
Count	30s	
GSM	260-300	
Fabric Type	Jersey Fleece Knit	
Fabric Colour	Navy Blue and Grey	


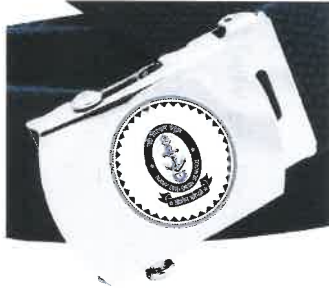
Fabric 11

Product Category	Tie	
Gender	Boys/ Girls	
Category	Primary /Secondary	
Season	Winter	
Yarn Type	100 % Polyester	
Count	2/90, 4 ply	
GSM	140	
Fabric Type	Jacquard Weave Fabric	
Fabric Colour	Navy Blue and Light blue stripes	

Fabric 12

Product Category	Socks	
Gender	Boys/ Girls	
Category	Kindergarten/ Primary /Secondary	
Season	Summer/ Winter	
Yarn Type	95 % Cotton , 5 % spandex	
Count	2/90, 4 ply	
GSM	160	
Fabric Type	Single Jersey	
Fabric Colour	Navy Blue with light blue stripes and Plain Grey	

Fabric 13

Product Category	Belt	 
Gender	Boys/ Girls	
Category	Primary /Secondary	
Season	Summer/ Winter	
Yarn Type	100 % Polyester with Iron Buckle	
GSM	180- 200	
Fabric Type	Niwar	
Fabric Colour	Navy Blue and 2 white stripes	